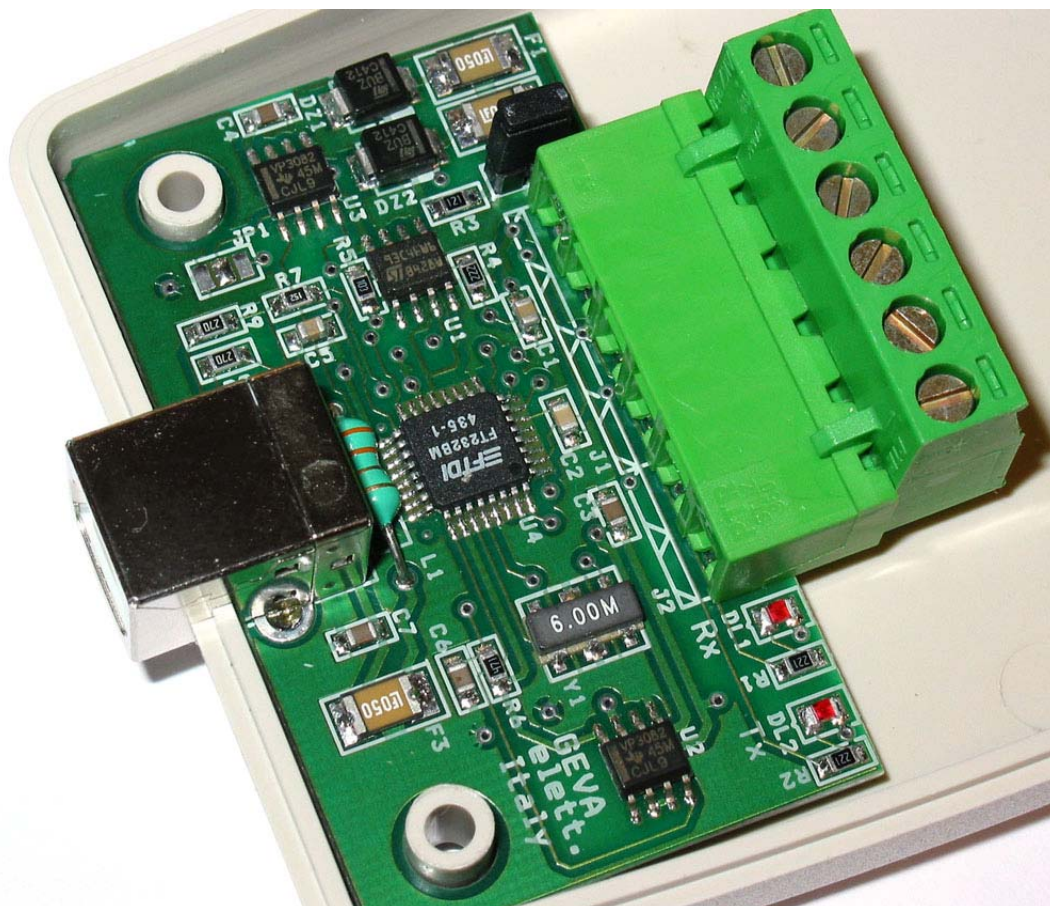
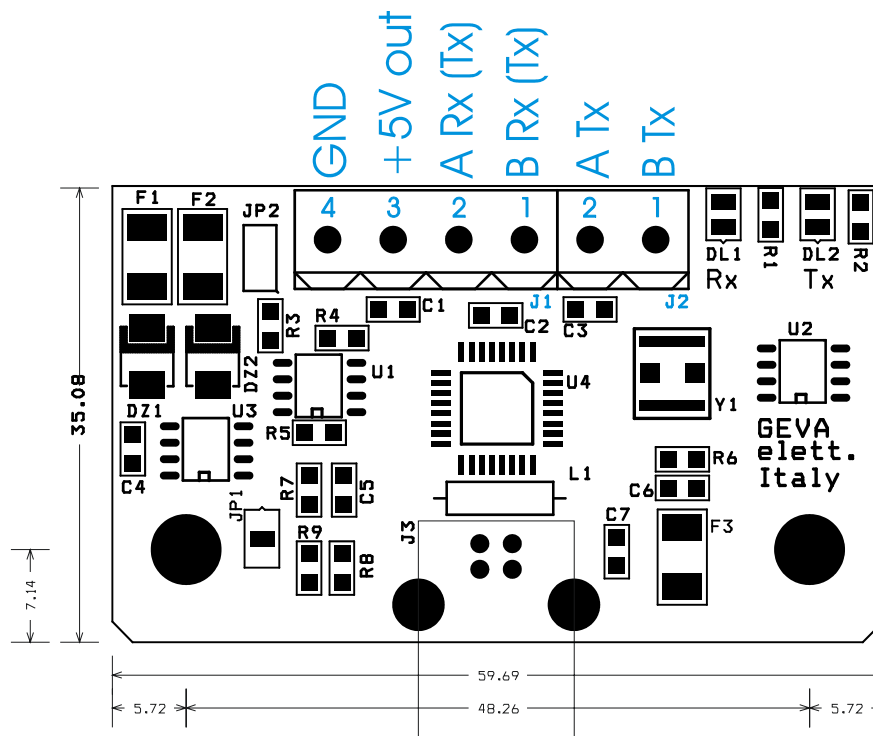


USB to RS485 converter / adapter
Convertitore / adattatore USB RS485





Full Duplex (4 wires)

JP1 close 2-3

1.J2 B Tx RS485

2.J2 A Tx RS485

1.J1 B Rx RS485

2.J1 A Rx RS485

4.J1 GND

Half-Duplex (2 wires)

JP1 close 1-2

1.J1 B RxTx RS485

2.J1 A RxTx RS485

4.J1 GND

JP2 = 120R terminator on 1 end 2 of J1

1 end 2 of J1 protectec with termofuse and varisor

3.J1 +5V out (from USB) - Use it with caution.

4.J1 GND

Virtual COM Port or DLL driver downloadable from www.ftdichip.com

GEVA elettronica

Via Navili 1 Almese (TO)

Tel 011-9352635 Fax 011-9352307

email@gevaelettronica.it

www.automazionealberghiera.it

www.gevaelettronica.it

